

STARTECH PUMPS COMPANY

Model 6819MP®

AVAILABLE MOUNTING CONFIGURATIONS

6819MP-F FRAME MOUNT
6819MP-EM ENGINE MOUNT
6819MP-RP-F REDI-PRIME FRAME MOUNT
6819MP-RP-EM REDI-PRIME ENGINE MOUNT

OPERATING LEVELS

MIN FLOW	750 GPM	170 m ³ /h
MAX FLOW	3800 GPM	860 m ³ /h
DISCHARGE SIZE	6"	150 mm
SUCTION SIZE	8"	200 mm
SOLIDS HANDLING	2"	51 mm
MAX SPEED	2100 RPM	2100 RPM
SHUT-OFF HEAD	620'	189 m
BEP HEAD	463'	141 m
BEP FLOW	2725 GPM	619 m ³ /h
BEP PERCENT	74%	74%



A typical picture of the pump is shown. Please contact StarTech Pump Company for further details. All information is approximate and for general guidance only.

PARTS	HYBRID	HIGH CHROME
IMPELLER	CHROME IRON	CHROME IRON
VOLUTE	DUCTILE IRON	CHROME IRON
SHAFT	17-4 P.H. STAINLESS STEEL	17-4 P.H. STAINLESS STEEL
SHAFT SLEEVE	416 STAINLESS STEEL CHR. PLATED	416 STAINLESS STEEL CHR. PLATED
SUCTION COVER	DUCTILE IRON	DUCTILE IRON
BACKPLATE	DUCTILE IRON	CHROME IRON
WEAR PLATE	CHROME IRON	CHROME IRON
MECHANICAL SEAL	TUNGSTEN CARBIDE VS. SILICON CARBIDE	TUNGSTEN CARBIDE VS. SILICON CARBIDE
BEARING FRAME	CAST IRON	CAST IRON
O-RINGS	VITON	VITON

The 6819MP pump is designed with StarTech's renowned quality and durability. It features a 6" discharge, 8" suction, and enclosed impeller. Available in Hybrid or High Chrome materials. StarTech's patented Cycloseal® design is standard, with a Type 2 single mechanical seal with Viton elastomers, stainless steel hardware and tungsten carbide vs. silicon carbide seal faces for abrasion resistance. Heavy-duty F18 bearing frame with double angular contact thrust bearing on frame-mount models.

- Flow rates up to 3,250 GPM / Heads up to 620'
- Redi-Prime® available for fully-automatic continuous priming
- **RunDry™ option (Indefinite run dry capability)**
- Heavy-duty construction
- Front adjustable wear plate
- Replaceable wear plates



AGRICULTURE



FOOD



INDUSTRIAL



MINING



MUNICIPAL



OIL & GAS



REFRIGERATION



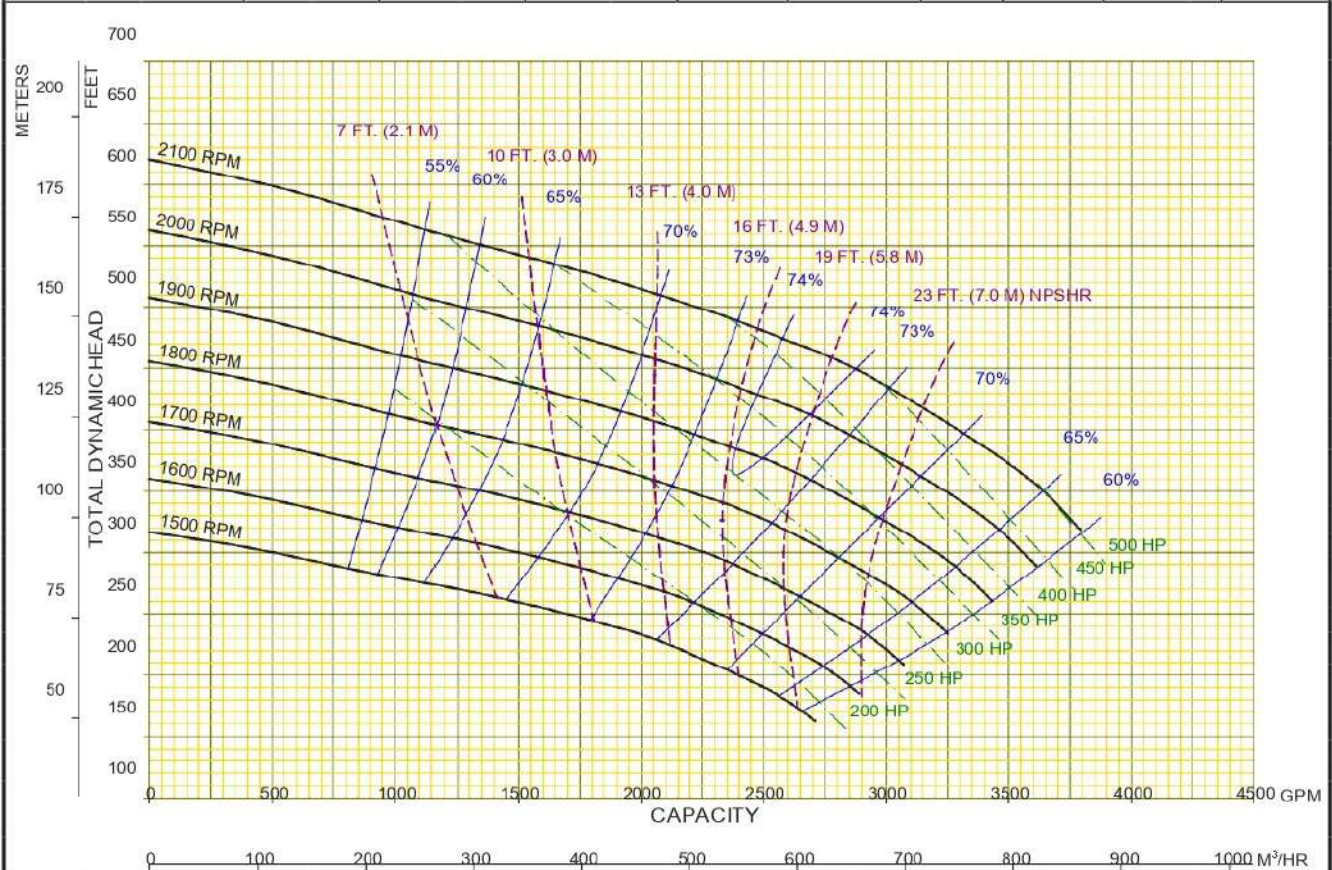
RENTAL



STARTECH PUMPS COMPANY

Model 6819MP®

Performances shown are for S.G. 1.0 60°F water, frame mounted configuration with Cyclo Seal. Other mounting styles or S.G. may require curve adjustments.	Speed	Impeller Dia.	Style	Volute	Solids Dia.	N _s	Suction	Discharge	No. Vanes
	VARIOUS	19.50"	ENCLOSED	SINGLE	2.00"	1090	8"	6"	2



StarTech Pump Company	03	12/31/15	AE	MODEL : 6819MP	CURVE NO: 6819MPVA
	00	06/17/13	---	TYPE : SOLIDS HANDLING	