



# STARTECH PUMPS COMPANY

## Model 2315MP®

### AVAILABLE MOUNTING CONFIGURATIONS

2315MP-F FRAME MOUNT  
 2315MP-EM ENGINE MOUNT  
 2315MP-RP-F REDI-PRIME FRAME MOUNT  
 2315MP-RP-EM REDI-PRIMEENGINE MOUNT

### OPERATING LEVELS

MIN FLOW	60 GPM	14 m³/h
MAX FLOW	470 GPM	107 m³/h
DISCHARGE SIZE	2"	50 mm
SUCTION SIZE	3"	75 mm
SOLIDS HANDLING	0.5"	13 mm
MAX SPEED	2100 RPM	2100 RPM
SHUT-OFF HEAD	398'	121 m
BEP HEAD	319'	97 m
BEP FLOW	430 GPM	98 m³/h
BEP PERCENT	52%	52%



A typical picture of the pump is shown. Please contact StarTech Pump Company for further details. All information is approximate and for general guidance only.

PARTS	HIGH CHROME MATERIALS
IMPELLER	CHROME IRON
VOLUTE	CHROME IRON
SHAFT	17-4 P.H. STAINLESS STEEL
SHAFT SLEEVE	416 S.S. CHROME PLATED
WEAR PLATE	CHROME IRON
MECHANICAL SEAL	TUNGSTEN CARBIDE VS SILICON CARBIDE
BEARING FRAME	CAST IRON
O-RINGS	VITON
BACKPLATE	CHROME IRON

The 2315MP pump is designed with StarTech's renowned quality and durability. It features a 2" discharge, 3" suction, and enclosed impeller. StarTech's patented Cycloseal® design is standard. Seal options include a double mechanical seal, packed gland, or Type 2 single mechanical seal with Buna-N elastomers, stainless steel hardware and tungsten carbide vs. silicon carbide seal faces for abrasion resistance.

- Seal type: Cycloseal® (Packing and double seal options available).
- Run-Dry™ and Redi-Prime® compatible.
- High strength stainless steel shaft.
- High-chrome white iron pump-end construction
- Thick cross-sections for abrasive wear and high operating pressures.
- Front adjustable, replaceable wear plate to regain **lost efficiency while in service.**
- Hardness rating > 650BHN provides better wear properties compared to standard cast or ductile iron.
- Heavy duty bearing frame construction with double angular contact thrust bearing. Oil or grease lubricated.



AGRICULTURE



FOOD



INDUSTRIAL



MINING



MUNICIPAL



OIL & GAS



REFRIGERATION



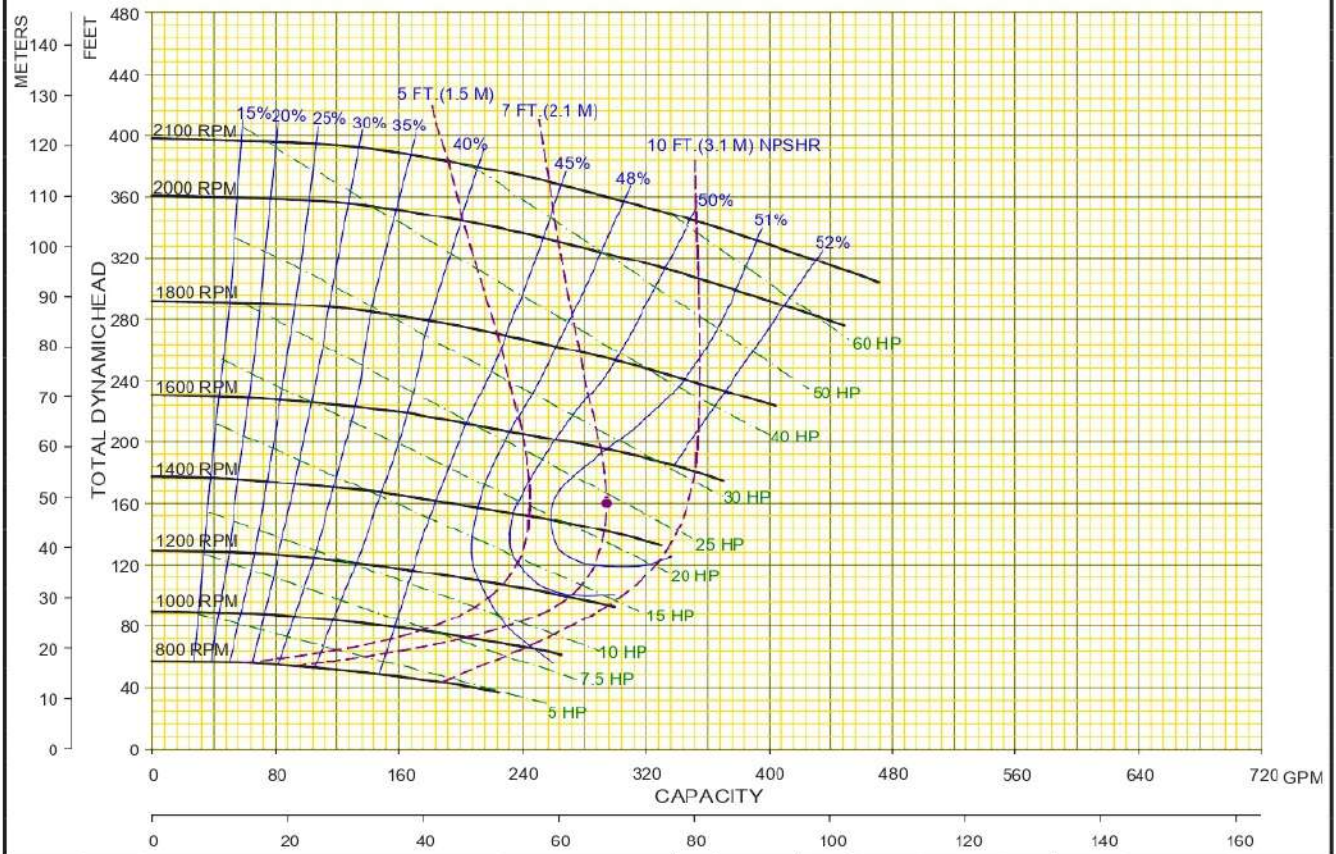
RENTAL



# STARTECH PUMPS COMPANY

## Model 2315MP®

Performances shown are for S.G. 1.0 60°F water, flange mount configuration. Other mounting styles or S.G. may require curve adjustments.	Speed	Impeller Dia.	Style	Volute	Solids Dia.	N <sub>s</sub>	Suction	Discharge	No. Vanes
	VARIOUS	15.00"	ENCLOSED	SINGLE	0.50"	620	3"	2"	3



StarTech Pump Company	03	12/07/15	FM	MODEL: 2315MP	CURVE NO: <b>2315MPVA</b>
	02	11/30/15	JCG	TYPE: SLURRY	